



***Ecostrad Digital***

***Electric Heating Element with Control Unit***

WARNING: Read these instructions carefully before using the appliance

**1. GENERAL INFORMATION**

**NAME & ADDRESS OF THE COMPANY:**

Ecostrad Ltd.

Sanderson House

22 Station Road,

Horsforth, Leeds,

United Kingdom,

LS18 5NT

UNITED KINGDOM

TEL : +44 (0)330 880 7005

[www.ecostrad.com](http://www.ecostrad.com)

**FOREWORD**

The purpose of this document is to provide important information, regarding the installation and use of this appliance.

To obtain the best possible performance and trouble-free operation from your appliance it is very important to carefully read these instructions.

The manufacturer declines all responsibility for any operations effected on the appliance without respecting the instructions reported in this manual.

## **2. SAFETY INSTRUCTIONS**

Please read the below instructions thoroughly and study the images carefully.

1. If the device appears damaged, do not use in any way. Contact your supplier for a replacement.
2. This device must be earthed. Installation should be conducted by a fully qualified electrician.
3. Do not install the heater under an electrical socket point.
4. The element should only be used within a suitable heater filled with a carefully measured amount of liquid.
5. If this liquid requires supplementation, contact your supplier for advice.
6. The heating element is intended to work within a liquid agent. It is advised not to turn the device on in dry conditions for longer than 5 seconds.
7. This electric heater is not a toy. Children under the age of 3 should not be allowed within close proximity of the device without the supervision of an adult.
8. Children should be supervised to ensure that they do not play with the appliance.
9. Children aged 3 to 8 should only be allowed to operate the heater when it has been properly installed and connected. The child must be under adult supervision or have been trained to safely operate the device while understanding the risks.
10. Do not touch metal parts – risk of burns. Always make sure that the power cable does not touch the heating element when it is hot.
11. If the towel rail is used as a clothes or towel dryer, ensure that the fabrics drying on it have only been washed in water, avoiding contact with any harsh chemicals.
12. To ensure the safety of very small children, install the towel rail so that the lowest tube is at least 60 cm above the floor.
13. The device should only be installed by a qualified installer in accordance with the applicable regulations regarding safety and all other regulations.
14. All installations to which the device is connected should comply with regulations applicable in the country of installation and use.
15. Extension leads or electric plug adapters should not be used in order to supply power to the heater.
16. The electric installation to which the heater is connected should have the right current differential and overcurrent relay (R.C.D.) of 30 mA.
17. An Omni-pole cut-out is required for disconnecting the device on all poles, via joints positioned at least 3 mm apart.
18. Please check the device regularly to make sure the power wirer is not damaged so it can be used in a safe manner.
19. The device must not be connected while being installed. Disconnect the power wire from the electrical circuit until the heater is ready to use.
20. Do not open the casing of the device. Any interference with internal components will invalidate the warranty.
21. The device is intended for home use only.

22. This appliance is not intended for use by persons (including children) with reduced physical, sensory or mental capabilities or lack of experience and knowledge, unless they have been given supervision or instruction concerning use of the appliance by a person responsible for their safety.
23. This appliance can be used by children aged from 8 years and above and persons with reduced physical, sensory or mental capabilities or lack of experience and knowledge if they have been given supervision or instruction concerning use of the appliance in a safe way and understand the hazards involved. Children shall not play with the appliance. Cleaning and user maintenance shall not be made by children without supervision.
24. If the supply cord is damaged, it must be replaced by the manufacturer, its service agent or similarly qualified persons in order to avoid a hazard.
25. Before installing or removing the device, make sure it is disconnected from the power source.
26. Regularly check the device for damage to ensure it is safe to use.
27. The device must be disconnected from the mains during cleaning and maintenance.

### **3. INTENDED USE OF DEVICE**

ECOSTRAD heating elements and control units are electric heating devices and are intended for installation and use in towel rails used for drying towels or clothes.

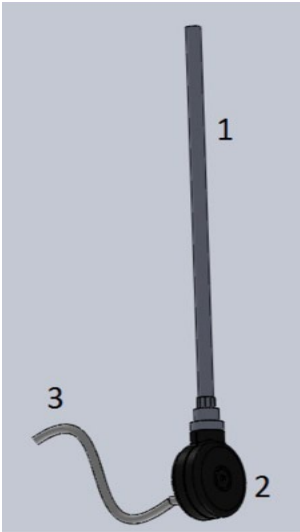
Heating elements are intended to operate in closed installation (not open to atmosphere) only.

### **4. TECHNICAL INFORMATION**

Model code	Ecostrad Digital
Electric supply	230 V / 50 Hz
Heating output available	200, 300, 400, 600, 800, 1000 W
Device protection class	Class I
Towel rail connection	G 1/2"
Casing protection mark	IP44
Certification	These products are in compliance with 2014/30/EU Electromagnetic Compatibility Directive and 014/35/EU Low Voltage Directive These products carry CE mark accordingly.

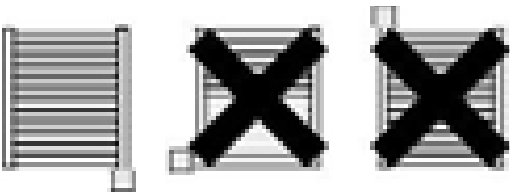
## **5. CONSTRUCTION OF THE HEATING ELEMENT UNIT**

A complete Ecostrad Digital unit contains heating element, controller and power cord.



1. Heating element
2. Controller
3. Power cord

## **6. ELECTRIC TOWEL RAIL**



1. The electric towel rail should be powered by the heating element only, not connected to a central heating system.
2. The towel rail must be filled with a suitable liquid heating agent: water, water with an anti-freezing agent, or an appropriate type of oil should be used. The Ecostrad Fina-E is pre-filled at the point of manufacture with a suitable heating medium that should not be tampered with.
3. Over-filling the towel rail can lead to exceeding acceptable pressure levels and damaging the towel rail or heating element.
4. The heating element must not be fitted horizontally or pointing downwards.
5. The towel rail is to be installed so that switches and other controls can not be touched by a person in the bath or shower.
6. **WARNING:** In order to avoid a hazard for very young children, this appliance should be installed so that the lowest heated rail is at least 600 mm above the floor.

## **7. INSTALLATION OF THE HEATING ELEMENT**

**WARNING!** The device must not be connected to electricity during installation. Unplug the device prior to installation.

**WARNING!** Please take every precaution when filling the towel rail in order to avoid being burnt by hot liquid.

**WARNING!** Do not switch the heating element on if it is not fully immersed in the towel rail.

**WARNING!** Do not install the heating element by gripping the control panel. This can cause damage to the internal wiring. Tightening the unit should be achieved using a wrench.

**WARNING!** Remove the protective coating on the plastic enclosure before use.

**WARNING!** The element can only be installed into the bottom of the towel rail on either the left-hand or the right-hand side of the unit.

**WARNING!** Any other installation is strictly prohibited.

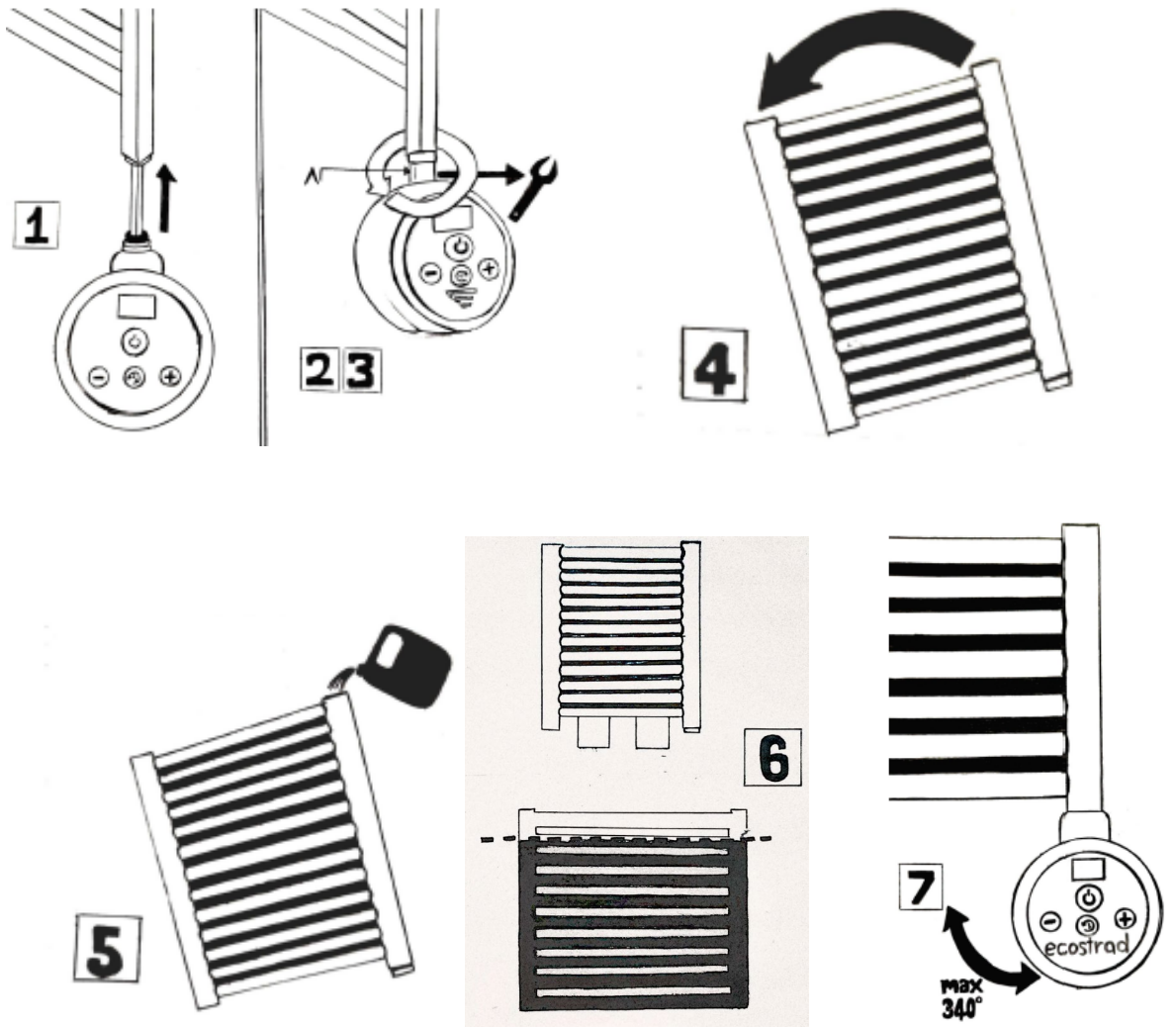
**WARNING!** Under no circumstance should the element be installed into the top of the towel rail.

**VERY IMPORTANT** – Do not install the heating element by turning the plastic enclosure. Tightening of the unit should be made with the help of a wrench. Please follow the pictures below.

**VERY IMPORTANT** – Ensure that the heating element's control unit is not exposed to leaking water.

## FITTING INSTRUCTIONS

NOTE – if you have purchased a towel rail with the element already installed you can skip to point 11. In all cases, the heating element must be installed by a professional electrician because it requires hardwiring and should not be used with a plug.



1. Insert heating element with attached controller into the threaded opening at the bottom end of the collector. See Fig. 1.
2. Twist the head of the heating element with a no. 26 spanner. See Figs. 2 and 3. Position the element in such a way that the indent in the head connection (A) is directed out into the room or to either side.
3. Make sure the connection between the towel rail and the heating element is tight.
4. Tilt the towel rail such that the opening at the top of the radiator is the highest point of the unit. Make sure the towel rail is not resting on the heating element controller, power cable or any other parts of the connection when you do this! See Fig. 4.
5. Fill the towel rail with the heating agent. See Fig. 5.
6. Put the towel rail back in an upright position and check the level of the liquid inside it. It should half-fill the second from topmost bar. See Fig. 6.
7. Test the level of the fluid by connecting the device to electricity and turning on the heating element.
8. Set the maximum possible temperature required and observe the towel rail as the temperature increases and the liquid level rises. If, on the way to achieving maximum temperature, any liquid appears to be slopping through the upper opening, you will need to drain some of the liquid.
9. To do this, turn off the heating element and disconnect the device from the electricity. Wait until the towel rail cools down and then pour a small amount of the liquid away. Then repeat steps 6-9 until no liquid leaves the opening.
10. Close the upper opening of the towel rail with the dedicated seal and hang it back on the wall.
11. Connect the heating element unit to the power supply. The unit should be hardwired to a fused spur. This is a task for a professional electrician and must not be undertaken DIY. The device will then be ready to work.

## **8. PRODUCT DISPOSAL**

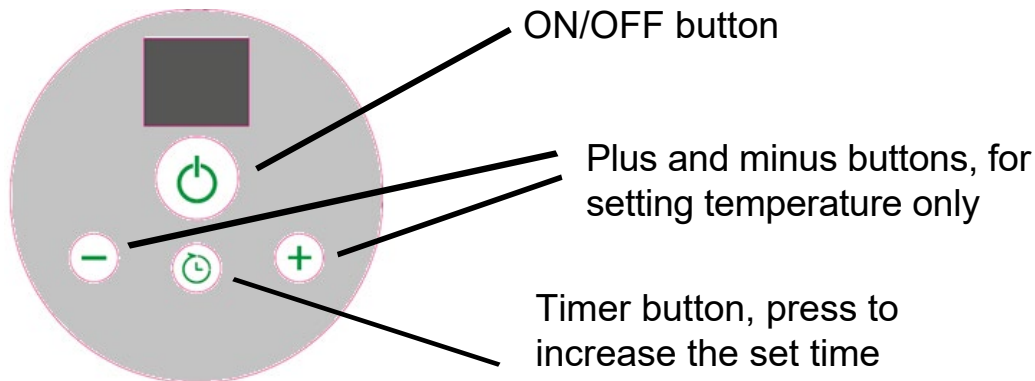








This symbol on the product and manual indicates that the device falls under European Directive 2002/96/EU. This means that the product should not be disposed of as general waste but should be brought to the appropriate collection point for recycling of electric and electronic devices.

Information on the appropriate point for used devices can be provided by your local authority or product distributor. By recycling and reusing the materials from old devices you are making an important contribution to protecting our environment.

## 9. OPERATION

The heating element heats the towel rail that it is installed within.



- Use  to turn the device on and off.
- Buttons  and  are used to regulate the temperature. The value of the set room temperature can be seen on the digital screen.
- Once the desired room temperature has been set, the screen will revert to the current room temperature.
- The time it takes for the room to reach the set temperature depends on many factors, including the size of the room and the power of the heating element.
- Press  to set a timer. Press  repeatedly to increase the set time period in intervals of one hour, from 1 to 5 hours. To cancel the timer, continue pressing  until the screen displays zero (0).
- When the timer is set, a flashing dot will appear on the display between the two numbers. This shows that the timer is working.
- In case of a power cut, all settings will need to be re-set.

NOTE – If you set the temperature of the control unit lower than the room temperature, the unit will not operate. The control unit operates when the temperature is set at least 1 degree higher than the room temperature.



## **10. WARRANTY**

1. The subject of this warranty is an Ecostrad heating element with control unit. Product name and characteristics are specified on the packaging.
2. By accepting the device on purchase, the Client confirms that the product is of full value. The Client should immediately inform the Seller of any discovered faults – otherwise it will be understood that the Product was faultless at the time of purchase. This refers especially to any faults or damage to the control panel case.
3. The warranty period for the Product is 24 months from the date of purchase.
4. You can activate your warranty here:  
<https://www.electricradiatorsdirect.co.uk/warranty/>
5. Claims can only be processed if the warranty has been activated and proof of purchase is presented. Manufacturer has the right to reject any claim on the grounds of not presenting of any of the above documents.
6. This warranty does not comprise any faults that are due to
  - a. incorrect (not in accordance with the manual) installation, use or disassembly,
  - b. incorrect use of the heating element (i.e. for any purpose that is not specified by the Manufacturer as intended for this type of product),
  - c. handling of the product by unauthorized persons,
  - d. any faults or damages caused by the Client after having purchased and accepted the Product.
7. The attached Product Manual is an integral element of the Warranty. Please read it carefully prior to the Product installation and use.
8. The Manufacturer is obliged to repair any production fault within 14 working days from receipt of the faulty device at the Manufacturer's premises.
9. Should the repair prove impossible, the Manufacturer is obliged to replace the faulty Product with a new, full-value unit of identical parameters.

## **11. FAULT CODES**

Code No	Possible Cause	Action to take
E01	<ul style="list-style-type: none"><li>• Heating sensor cable might be disconnected.</li><li>• Heating probe might be damaged.</li><li>• Heating element might be damaged.</li></ul>	The product should be reset. Cut power to the device then restore. If the fault continues, switch off the product and contact the manufacturer.
E02	This code shows that the device has detected an overheat state and has cut power. This might be because: <ul style="list-style-type: none"><li>• Electronic control unit might be damaged.</li><li>• Heating element might be damaged.</li><li>• Voltage change in the electric supply system might affect the unit.</li></ul>	The product should be reset. Cut power to the device then restore. If the fault continues, switch off the product and contact the manufacturer.